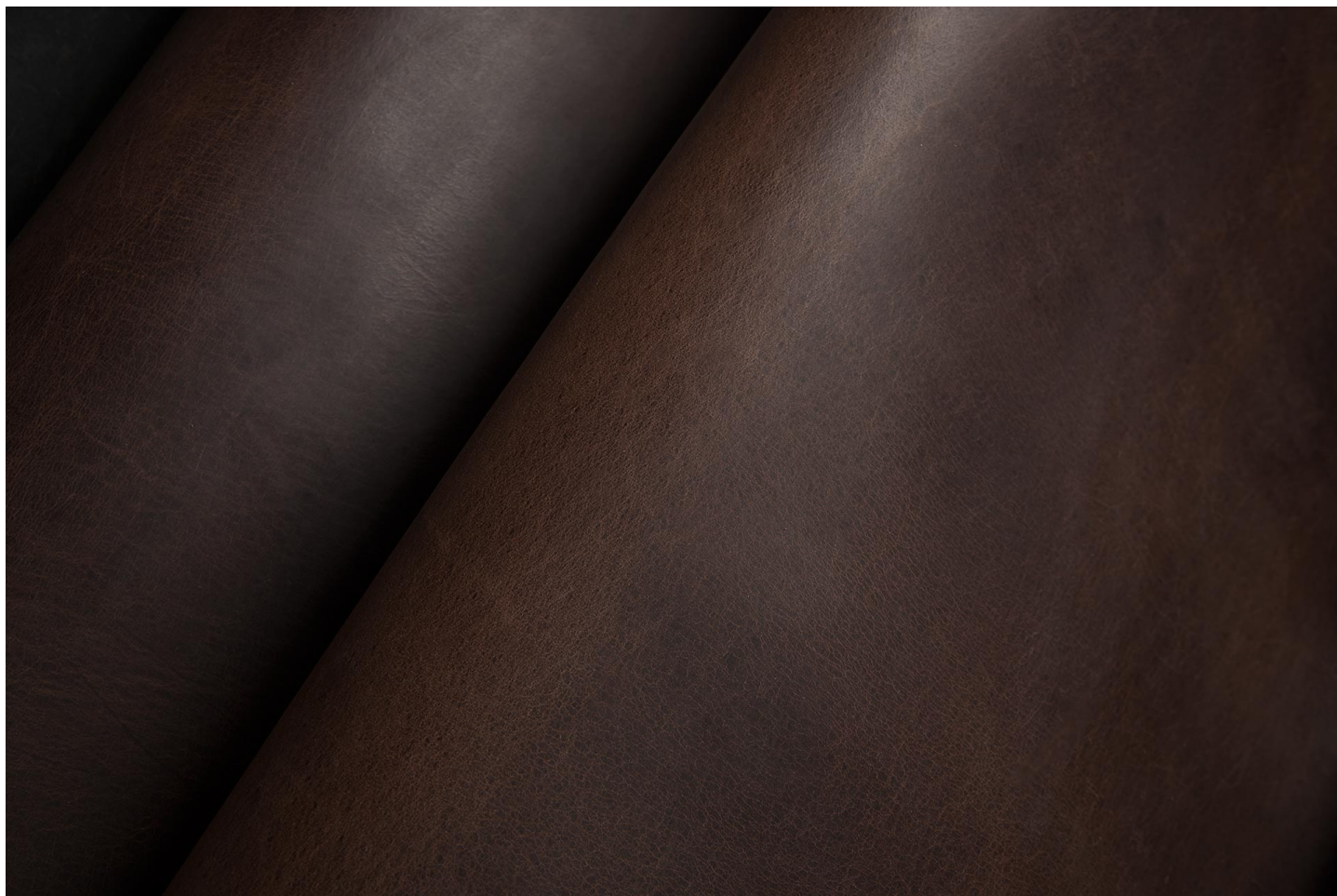




Belts / Derma



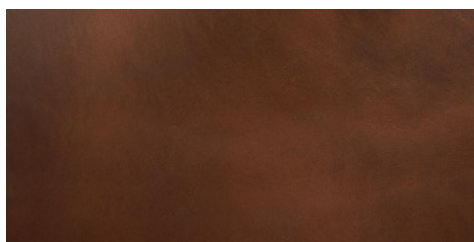
Completely vegetable tannig, smooth, pull-up article with waxy hand

LEATHER
Double Butt
Shoulder

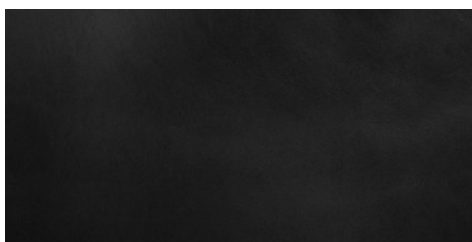
THICKNESS
1.0-4.0

APPLICATIONS
Belts

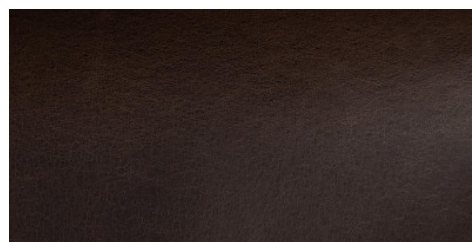
COLORS



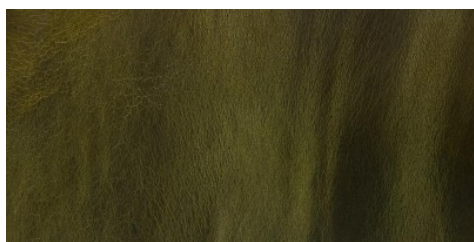
COGNAC



NERO



TESTA DI MORO



VERDE

DISCLAIMER: I colori delle immagini di questo catalogo possono differire dalla resa su pelle. The colours of the images of this catalogue may differ from the way they appear on the leather.