



Belts / Nabuk



Completely vegetable tannig, for lining belt. It's possible to add dust-repellent.

LEATHER
Double Butt
Shoulder

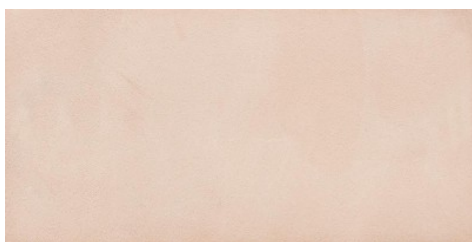
THICKNESS
1.0-4.0

APPLICATIONS
Belts

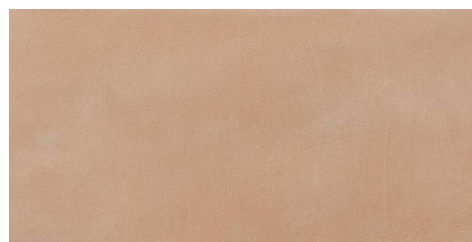
COLORS



BRUCIATO



NATURALE



NOCCIOLA



SOLMAN

DISCLAIMER: I colori delle immagini di questo catalogo possono differire dalla resa su pelle. The colours of the images of this catalogue may differ from the way they appear on the leather.